

Delta Raising Plinth

Raised Wetroom Installation Guide
To Be Used In Conjunction With DeltaTray Installation Guide



Delta Raising Plinth

Installation Guide With DeltaTray

Delta Raising plinths are designed to be used in conjunction with DeltaTrays to create luxurious Raised Wetrooms and shower enclosures.

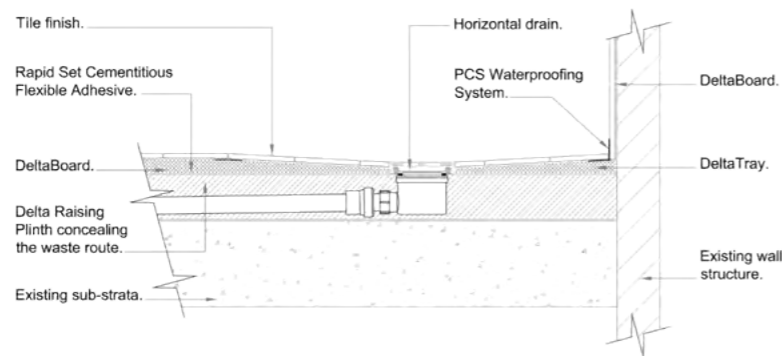
They are ideally suited for installation above concrete floors where the drain body and waste route can be concealed within the raised platform preventing the need for excavation of the concrete floor. They can also be used to create a raised shower area onto wooden floors.

Raised Wetrooms are created using a Delta Raising Plinth, a fully waterproof pre-formed base that is available to suit all DeltaTray sizes.

The Delta Raising Plinth comes with a machined aperture to hold the drain body in position and is installed below a DeltaTray. A DeltaTray is fixed to the top of the raising plinth with cement based flexible adhesive.



Typical Floor Section



STEP 1
Clear the working area and position the Raising Plinth in the desired position. Mark the floor around the raising plinth.

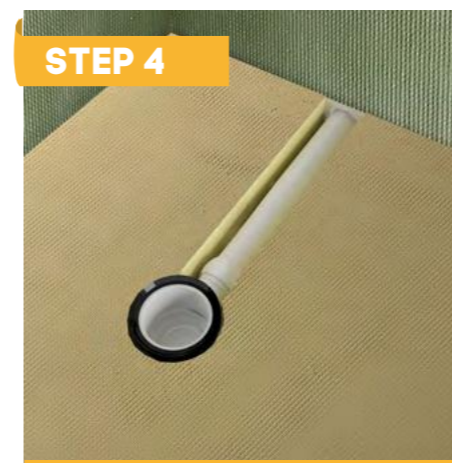
Cut a 60mm wide channel through the Raising Plinth to make a clear path for the waste pipe route. This channel needs to be back filled with adhesive at a later stage so do not cut it wider than it needs to be. We highly recommend that all walls in the shower area are lined with Deltaboard creating a completely insulated, waterproof solution ready for the application of tiles.



STEP 2
The Raising Plinth is permanently fixed in place using a good quality, cement based, rapid setting, flexible tile adhesive. Apply the adhesive with a suitable thick bed, notched trowel to the area where the Raising Plinth is to be placed.



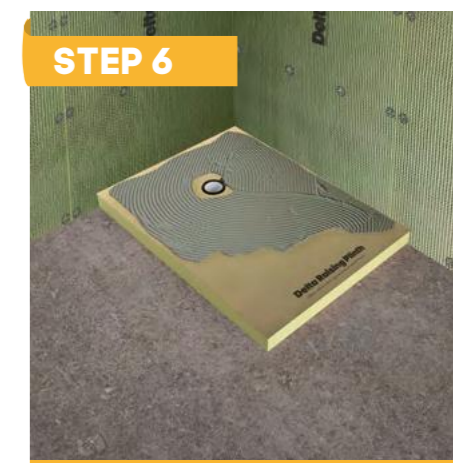
STEP 3
Place the Raising Plinth into the adhesive and firm down to ensure good contact with the adhesive bed. Check that the surface of the Raising Plinth is level.



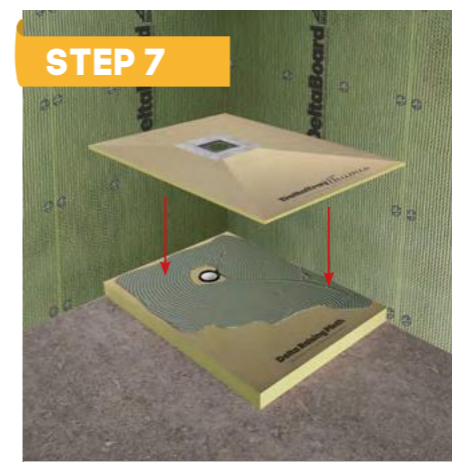
STEP 4
Locate the drain body in position and connect to the waste pipe using 1 1/2" ABS solvent weld waste pipe. Ensure all joints are water tight as you will not be able to return to this assembly later.



STEP 5
To ensure the drain body aligns with the drain aperture within the DeltaTray, temporarily place the DeltaTray onto the plinth checking that they align, make any adjustments as necessary.



STEP 6
Apply a bed of adhesive to the top of the Raising Plinth using a notched trowel. The adhesive should also be used to backfill the channel around the waste pipe. When applying the adhesive near the drain body it is important to leave a 10mm gap around the rubber seal of the drain body. Should the adhesive come into contact with the rubber seal, remove the seal immediately and clean thoroughly with water before continuing.



STEP 7
Place the DeltaTray on the Raising Plinth and firm down onto the adhesive bed and against the walls. Check that the edges of the tray are level. If the DeltaTray is set out of level, water will not flow to the drain correctly.



STEP 8
Following the instructions provided with your chosen DeltaTray fit the threaded waste collar into the drain body and sufficiently tighten using the securing tool. Ensure a good seal is created between the DeltaTray and drain before the adhesive hardens ensure.

Waterproofing & Joint Bridging

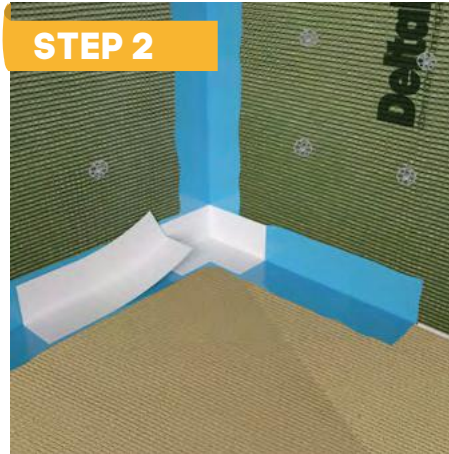
DeltaTray and DeltaBoard are waterproof elements manufactured ready to receive the application of tiles and do not require additional surface preparation. However it is essential that all joint and abutments in areas subject to moisture and water ingress must be bridged with a suitable waterproofing system prior tiling.



STEP 1

We highly recommend that all walls in the shower area are lined with DeltaBoard, creating a completely insulated, waterproof solution ready for the application of tiles.

Apply a 5mm bead of DeltaSeal where the DeltaTray meets the walls, and also at internal wall to wall joints within the shower zone. If there are any joints or gaps greater than 5mm wide we recommend filling the gaps with a cement based tile adhesive before applying DeltaSeal.



STEP 2

Using a suitable brush or roller, apply a thin coat of PCS Waterproofing Paste over all floor and wall joints to be sealed.

The paste should be applied approximately 15mm wider than the Fleece Tape. Bed the fleece tape into the wet paste, starting with the pre-fabricated corner tape first, making sure that no air pockets remain under the tape.



STEP 3

For all remaining joints, cut the tape roll to the required length allowing the tape to overlap any previously fitted tape by a minimum of 50mm.



STEP 4

Make sure that all tape is bedded into the wet paste. When the first coat of paste has dried (10-30 minutes) a second and final coat of paste must be applied over the taped to ensure a watertight seal is created.

It is important that all screw fixings within the shower area, are also made waterproof by applying the tape and waterproofing paste.

Delta Waterproofing Kit Contents



Internal Corners x2



Pipe Collar x2



DeltaSeal



Fleece Tape



Waterproofing Paste