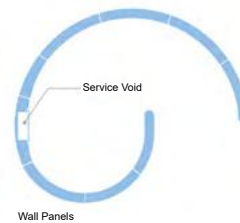
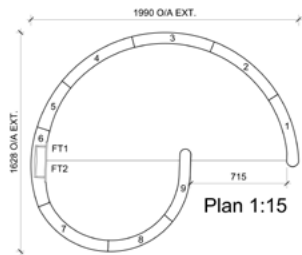
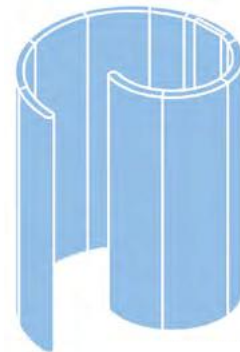
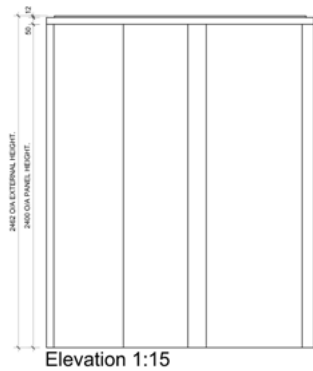




PCS Spiral Shower Enclosure

Spiral Shower Enclosure Dimensions

REV. 05.01



Fixing Kit & Wall Panel Components

Panel 1



Panel 2



Panel 3



Panel 4



Panel 5



Panel 6



Panel 7



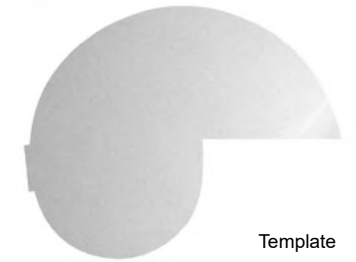
Panel 8



Panel 9



Pipe Cover



PCS Shower Installation Guide

PCS Spiral Shower Wall Panels are modular panels that are easy to install, lightweight and waterproof, creating a luxurious showering environment. The wall panels when assembled, create a seamless, robust, curved shower enclosure. The wall panels are manufactured from high density EPS, and have a factory applied, fibre reinforced cementitious surface.

PCS Spiral Shower Tray Formers create the perfect shower base to suit the profile of the wall panels.

PCS Spiral Shower Tray Formers are not designed to span voids and gaps within the subfloor of any size, therefore they must be fully supported on the underside by a solid structure, such as concrete or plywood, to support the PCS Shower Tray Former against movement and deflection. For guidance on typical supporting structures and typical drainage connections for the PCS shower tray former, we advise that you refer to PCS "Thames shower tray fixing instructions" available for download on our website; www.pcsboard.com although your particular installation may differ, the information given in the Thames installation instructions will provide good practical advice.

Wastewater Connections:

- All wastewater drainage connections must comply with building regulations code of practice: BS EN 12056-2:2000.
- The minimum pipe gradient fall from the shower trap to the soil or drain should be minimum 18mm/per mtr.
- The maximum pipe discharge run from the shower trap should be no more than 3 meters max, and sharp bends should be avoided.
- If the shower tray is replacing a bath and the same discharge pipe is being used, the waste must be rodded straight through to the drainage final discharge point to clear any debris which may be in the pipework prior to installation of the shower tray.
- Non-return valves or secondary traps should not be connected to the waste water run as this can significantly reduce the drainage capacity of the shower tray.

Optional Components



1x 2.5kg
Waterproofing Paste



1x Waterproof
Tape 30m



3x DeltaSeal



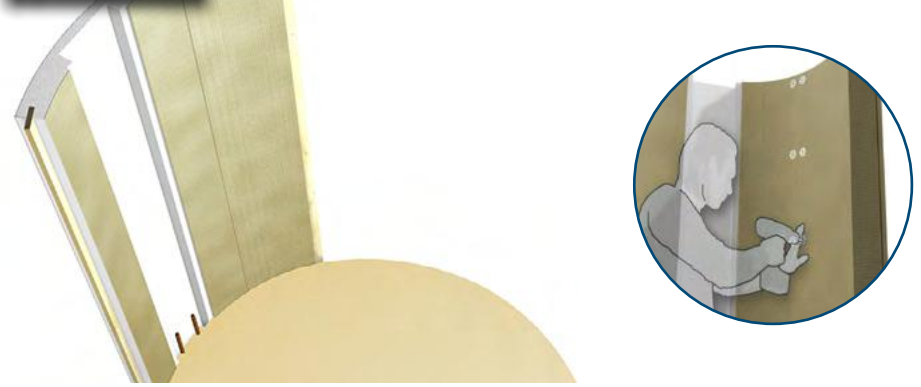
100 S/S Screws &
Washers

STEP 1



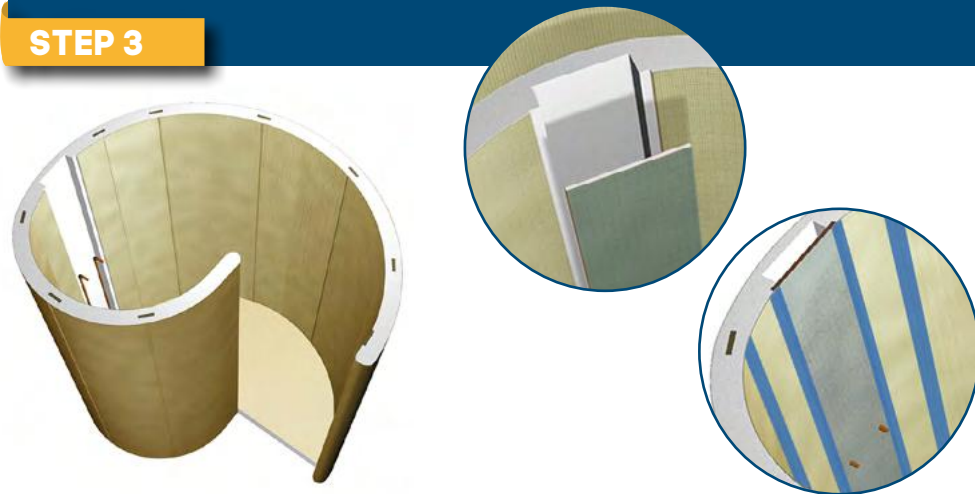
- A)** Install the PCS Spiral Shower Tray Former. Ensure a water leak test to the drainage connections is carried out before continuing.
B) Place the template onto the shower tray. The polystyrene cylinder on the template should drop into the grate opening in the shower tray to accurately locate the template. The self-adhesive tabs on the underside of the template will temporarily hold the template in position. (The template is to be removed once the wall panels have been securely fitted).
C) The wall panel (W2) is designed to house the pipework and mixing valves of the shower unit. The panel (W2) has a plywood frame for the secure attachment of the water pipes and shower hardware.
Position panel (W2) first, aligning the opening in the panel with the pipework for connection to the water supply.
D) Apply a thick bead (12mm diameter) of DeltaSeal in a zig zag form, onto the perimeter of the shower base for each wall panel, ensuring a strong permanent bond is created.
E) Position the wall panel firmly against the template ensuring good alignment. Check to ensure the panel is level.

STEP 2



- A)** Care must be taken to correctly position each wall panel (W1, W2, W3) onto the shower base. Apply a thick bead (12mm diameter) of DeltaSeal in a zig zag form, onto the perimeter of the shower base for each wall panel.
B) The wall panels are supplied with a factory fitted, composite fixing fillet, to aid positioning and securing of the panels. Prior to connecting adjacent panels, a bead of DeltaSeal must be placed into the corresponding rebate and onto the edges of each panel to permanently secure the panel structure. PCS fixing washers and screws must be used to hold the panels in place.
C) The PCS fixing washers and screws are designed to bite hold of the fixing fillet, forming a permanent part of the fixing detail. The washers should be placed either side of the panel joint and at 300mm to 400mm centres along the length of the panels.

STEP 3



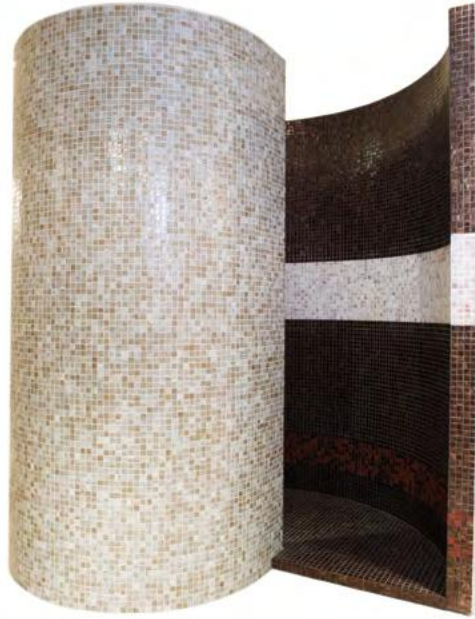
- A)** Connect any hot and cold water pipes and plumbing hardware, and securely attach onto the plywood support in the recess of the wall panel (w2).
B) Once the plumbing and shower hardware has been tested for leaks, the cement coated cover panel can be fixed onto wall panel (W2) concealing the plumbing and associated shower hardware. Attach the cover panel to the plywood edging of panel (W2) using screws and washers.

STEP 4



- A)** Once the panels and cover panel has been fitted, and the DeltaSeal bond has fully cured, all joints, fixings and any gaps between each wall panel and the shower floor, must be bridged using PCS Waterproof Tape and PCS Waterproofing Paste prior to starting tiling. Refer to PCS waterproofing guide for information.

NOTE - CEMENT BASED TILE ADHESIVE MUST BE USED TO FIX TILES -READY MIXED ADHESIVE MUST NOT BE USED. All information is given as guidance and if adhered to will perform as intended. We fully guarantee the quality of our products. As we do not have knowledge of site conditions and capability of the installer, we accept no liability for damage which may arise as a result of installation.



PCS Ltd
Hemfield Court,
Makerfield Way,
Ince,
Wigan,
WN2 2PR

Tel: +44 (0) 1942 820131
Web: www.pcsboard.com

Building Regulations

All information is given as guidance and if adhered to will perform as intended. We fully guarantee the quality of our products, however, as we do not have knowledge of site conditions or the capability of the installer, we cannot accept liability for damage which may arise due to a result of incorrect installation. The information and advice provided by PCS does not override nor supersede building regulations. It is the responsibility of the user to seek professional guidance to ensure PCS products are compatible for their intended use and that the products comply with building regulations.

PCS Shower Enclosure